



# CAAC Design and Construction Update

6-15-2023



# 2022 Projects

## Additions



# Ralston Valley HS

## 10 Additional Classrooms

### EUA - Himmelman

Construction



# Ralston Valley HS 10 Additional Classrooms EUA - Himmelman

Construction

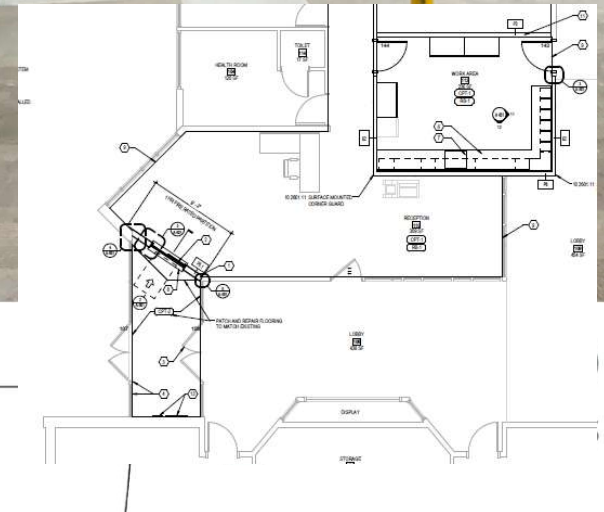




# 2023 Efficiency Future Ready & DW projects

# Ute Meadows ES – Efficiency Future Ready MOA – Crossland

Construction  
\$606,581





# Blue Heron ES – Efficiency Future Ready MOA – Crossland

Construction  
\$628,145



# Mortensen ES – Efficiency Future Ready DLH – Crossland

Construction  
\$840,810





# Shaffer ES – Efficiency Future Ready DLH – Crossland

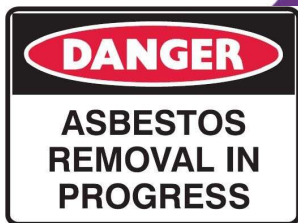
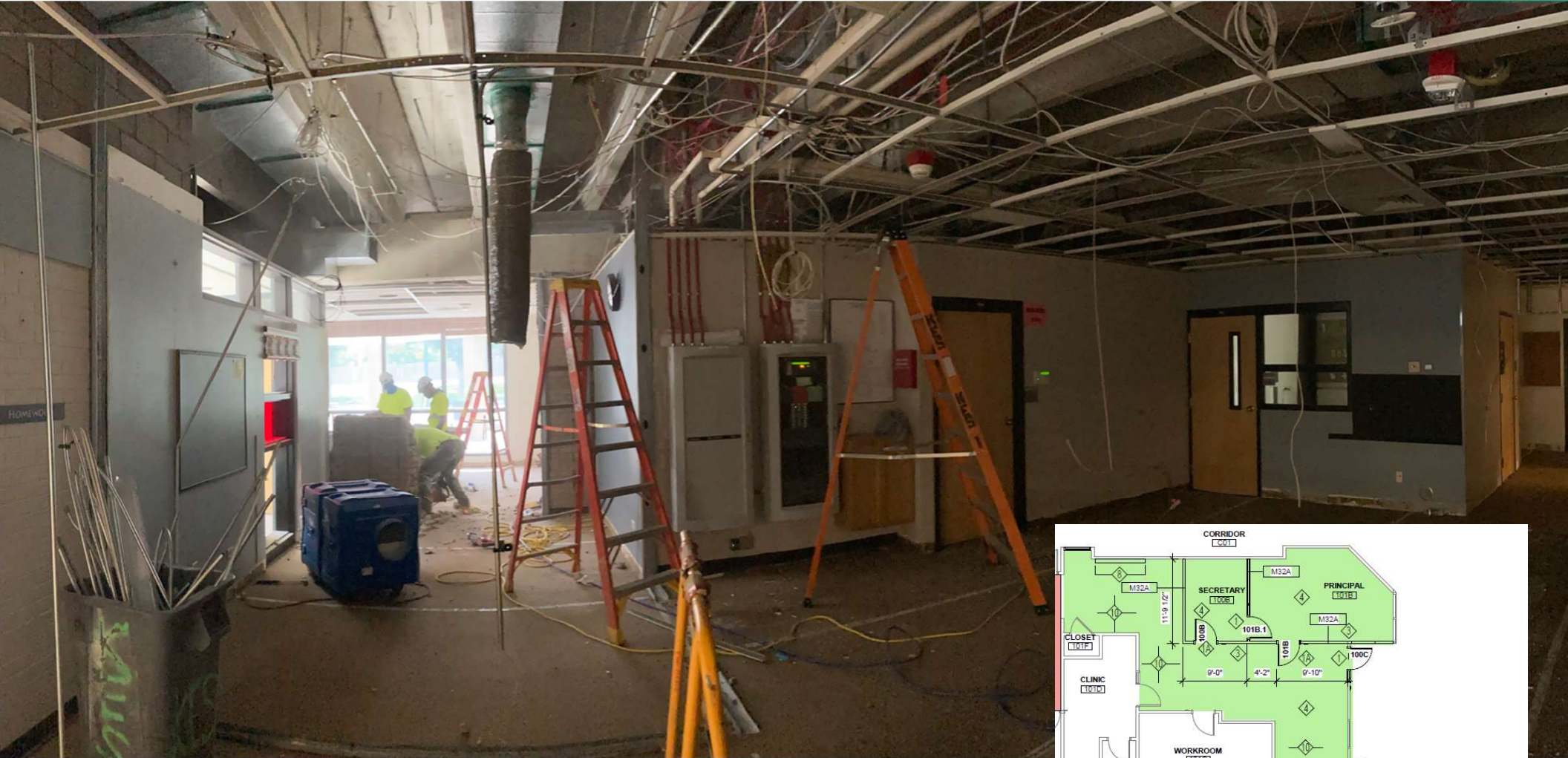
Construction  
\$790,942





# Ken Caryl MS – Efficiency Future Ready HCM – PG Arnold

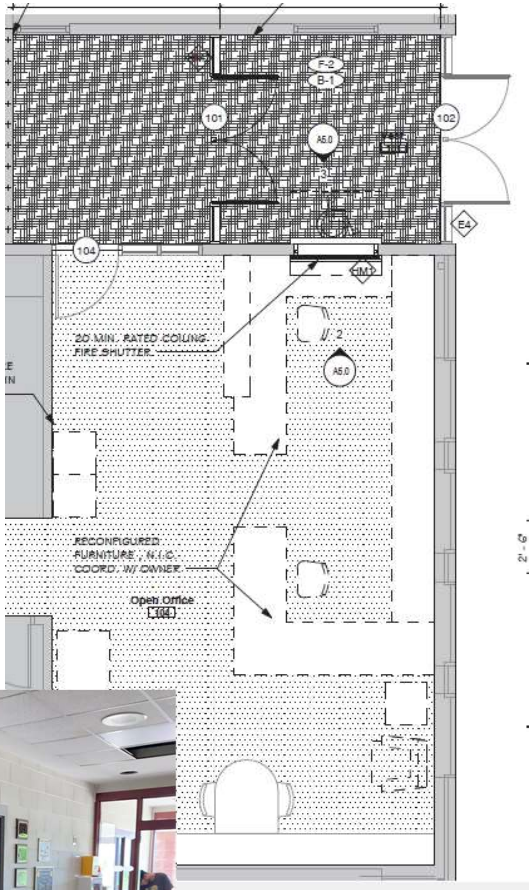
Construction  
\$1,606,000





# Mt Carbon – Efficiency Future Ready Eidos – Single Track

Construction  
\$521,213





# Summit Ridge MS – Efficiency Future Ready H&M – GTC

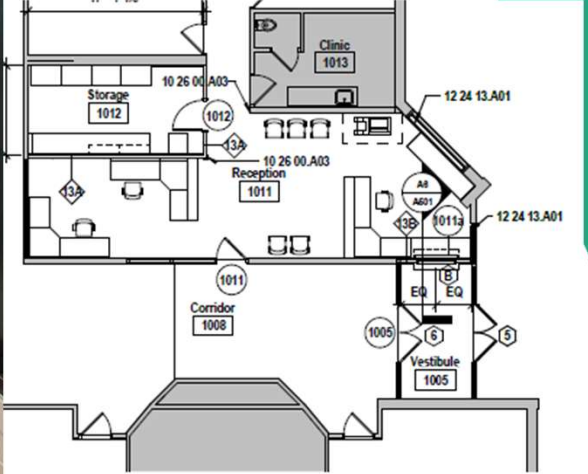
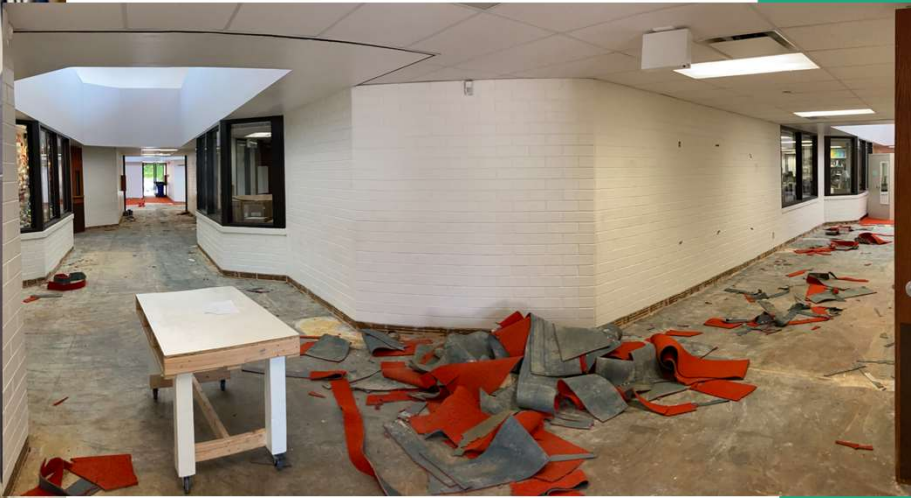
Construction  
\$1,179,200





# Kendallvue ES – Efficiency Future Ready H&M – GTC

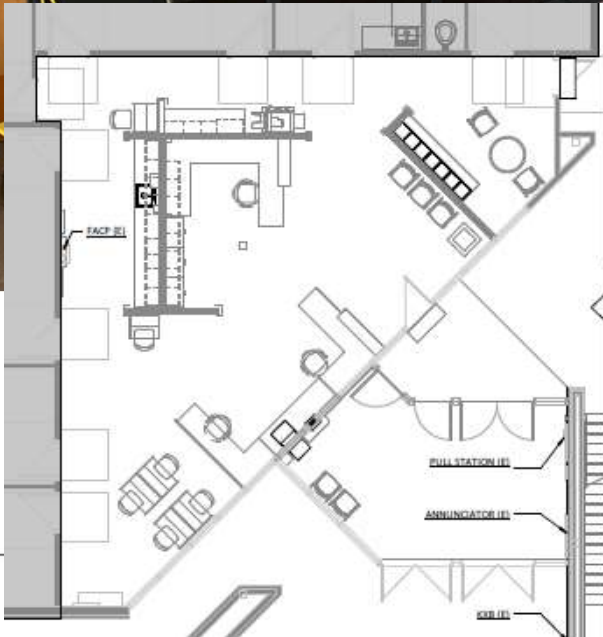
Construction  
\$1,194,500





Deer Creek MS  
Efficiency Future Ready  
RB+B – GTC

Construction  
\$521,700



**DANGER**  
ASBESTOS  
REMOVAL IN  
PROGRESS

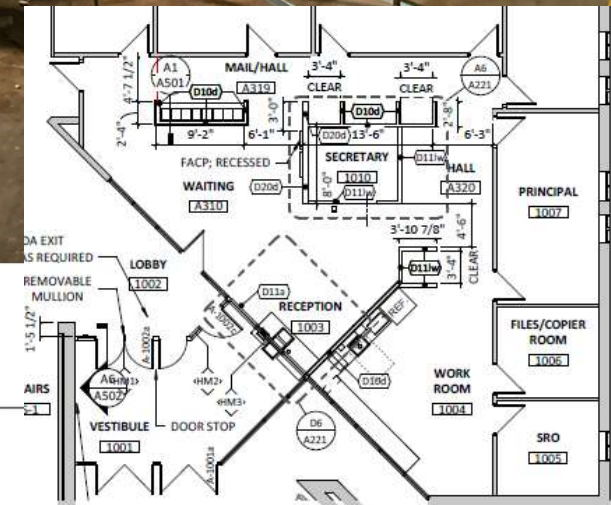


# Mandalay MS

## Efficiency Future Ready

### RB+B – GTC

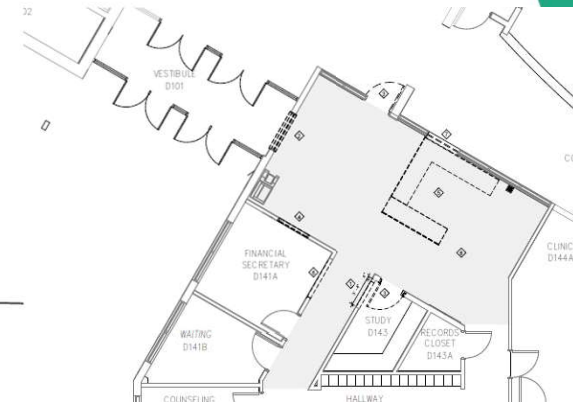
Construction  
\$595,700





# Dunstan MS – Efficiency Future Ready HCM – Single Track

Construction  
\$896,946





# Sobesky Academy – Efficiency Future Ready Eidos – Singletrack

Construction  
\$556,500





# Pennington ES – Efficiency Future Ready Eidos – Single Track

Construction  
\$774,500





# Bear Creek K8 – Efficiency Future Ready MOA – Flintco

Construction  
\$532,112



# Falcon Bluffs MS – Efficiency Future Ready MOA – Flintco

Construction  
\$937,343





# Governors Ranch – Efficiency Future Ready MOA – Flintco

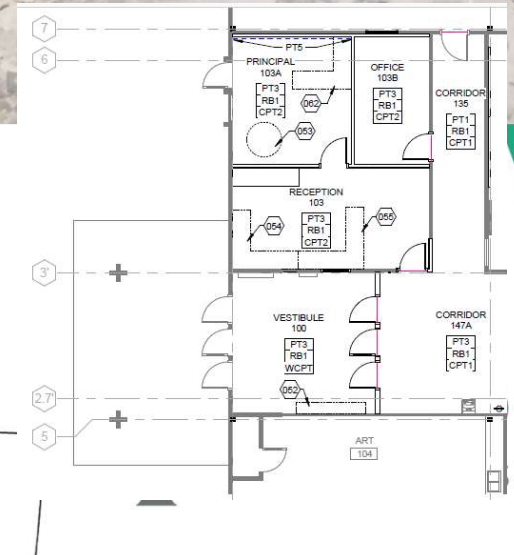
Construction  
\$586,031





# Little ES – Efficiency Future Ready Treanor HL – ADMiller

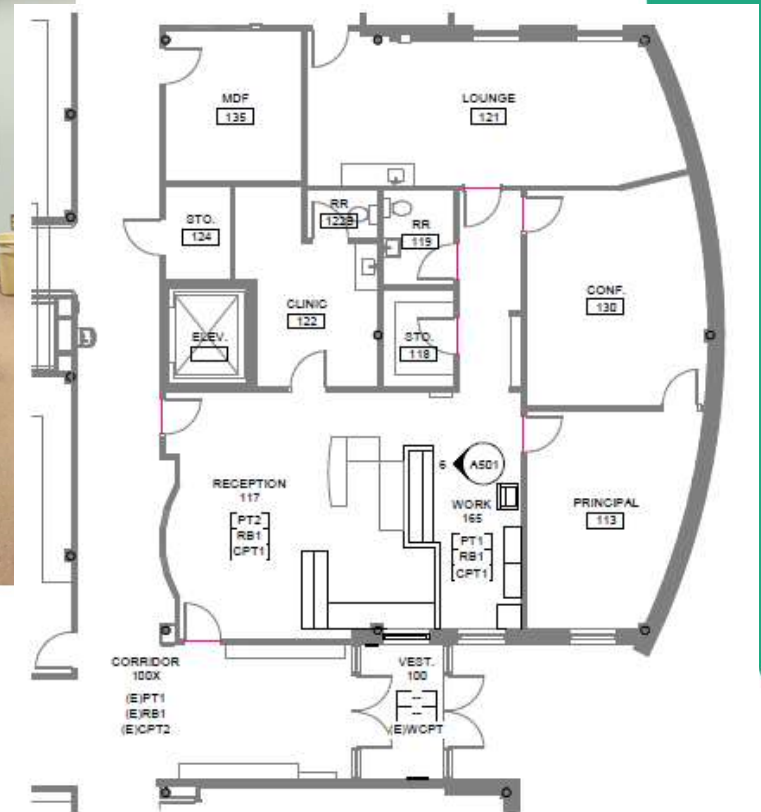
Construction  
\$715,974





# S Lakewood ES – Efficiency Future Ready Treanor HL – ADMiller

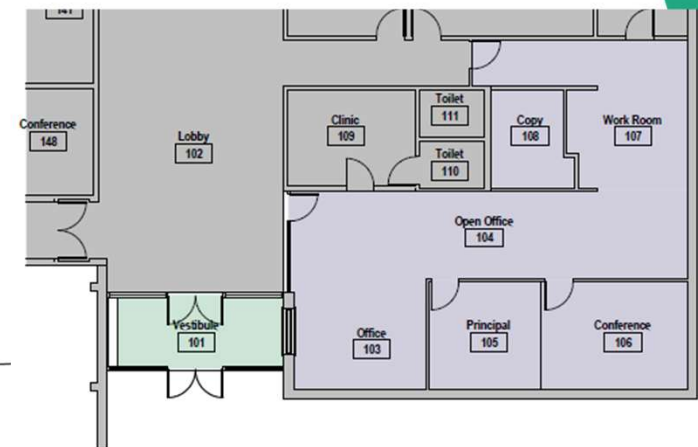
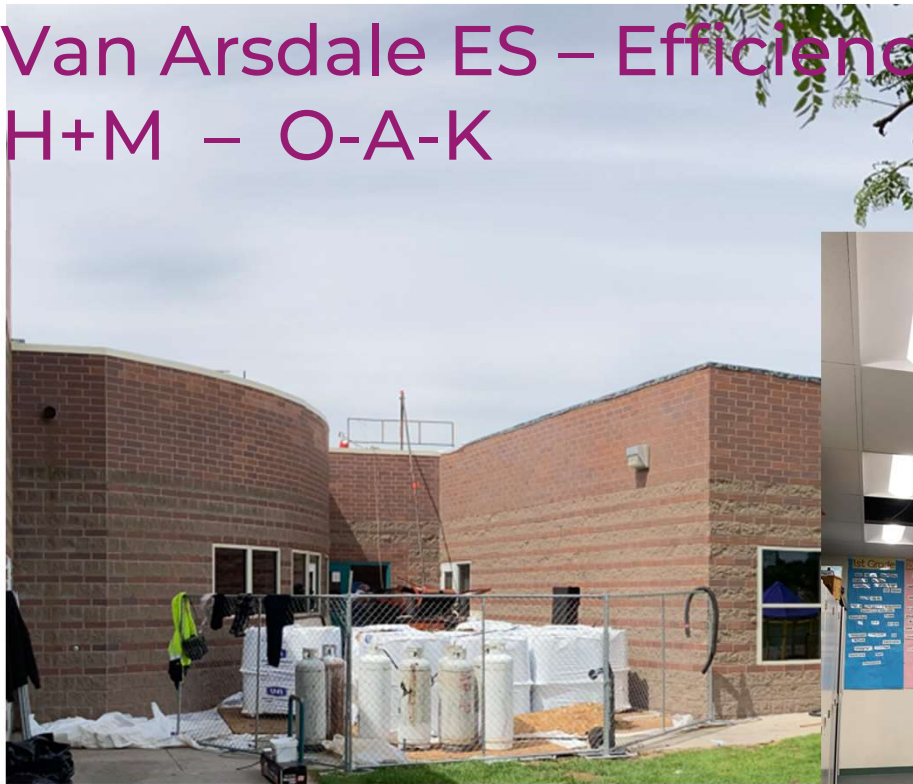
Construction  
\$464,010





# Van Arsdale ES – Efficiency Future Ready H+M – O-A-K

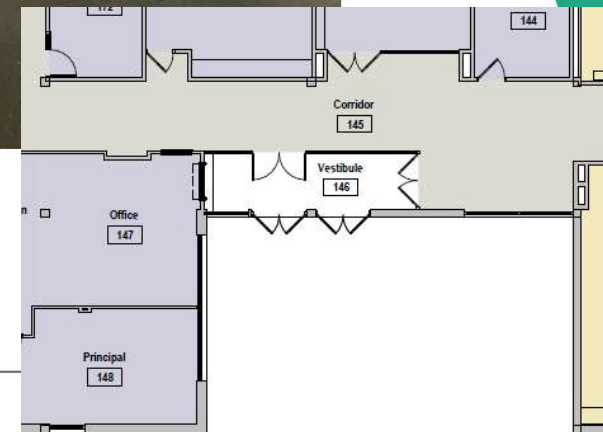
Construction  
\$1,028,750





# Swanson ES – Efficiency Future Ready H+M – O-A-K

Construction  
\$2,193,000



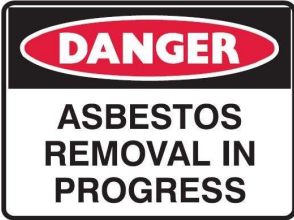
# Oberon MS – Efficiency Future Ready

Larson Incitti – Himmelman

Construction  
\$3,054,820



START May 30





# Edgewater ES – Efficiency Future Ready HCM – PG Arnold

Construction  
\$535,000





# Connections – Efficiency Future Ready Studiotrope – Brannon / Pacific Air

Construction  
\$104,342





# Efficiency Future Ready Wheat Ridge HS Eidos – GTC

Construction  
\$11,223,514



# Efficiency Future Ready Wheat Ridge HS Eidos – GTC

Construction  
\$11,223,514





# Efficiency Future Ready Wheat Ridge HS Eidos – GTC

Construction  
\$11,223,514





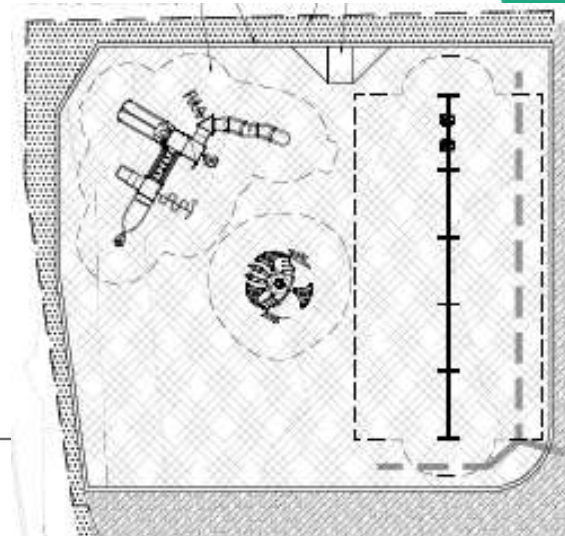
# DW Playground 2023

## Edgewater ES

## Hutchinson ES - Complete

## Design Concepts - Richdell

Construction  
\$460,001



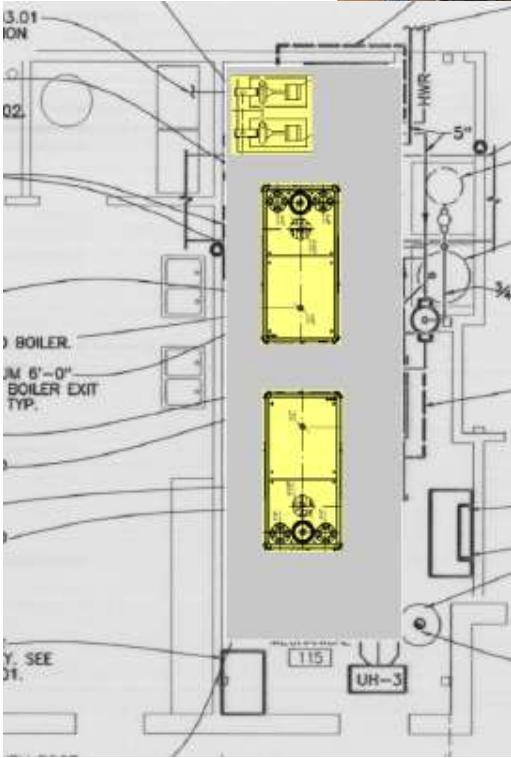
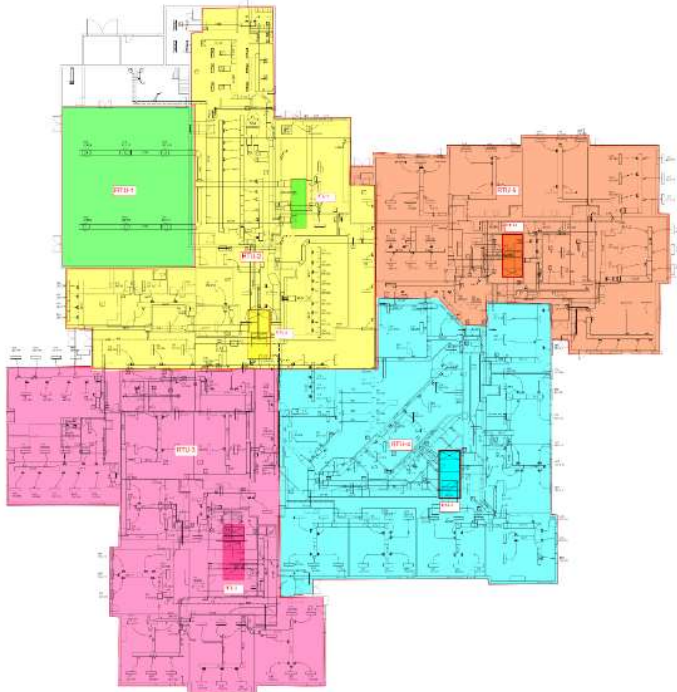


# DW Mechanical 2023 Bradford South (RTU's, Controls), Sobesky (Boilers, Pumps, Controls)

\*West Woods ES scope & funding moved back to E&FFR summer 2024

## Columbine – CMGC Himmelman

Construction  
\$2,445,091





# JeffcoNET Henkels & Mc

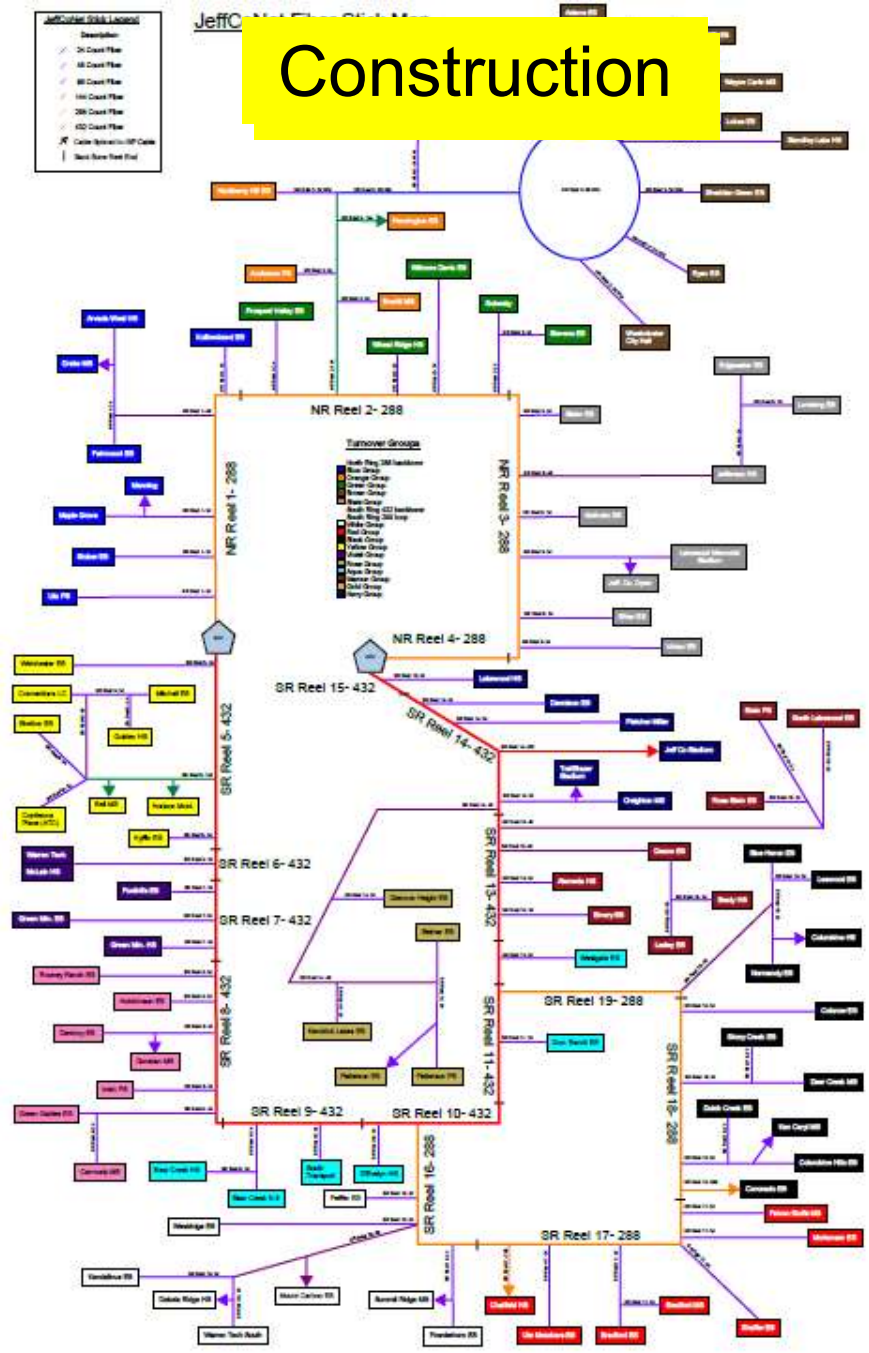
Project Start  
April 29, 2020

1,109 Permits to date  
3 remaining

Miles Fiber installed  
150 (87%)

66 of 96 sites have been  
Turned over to Jeffco

## Final south schools turned over end of June 2023

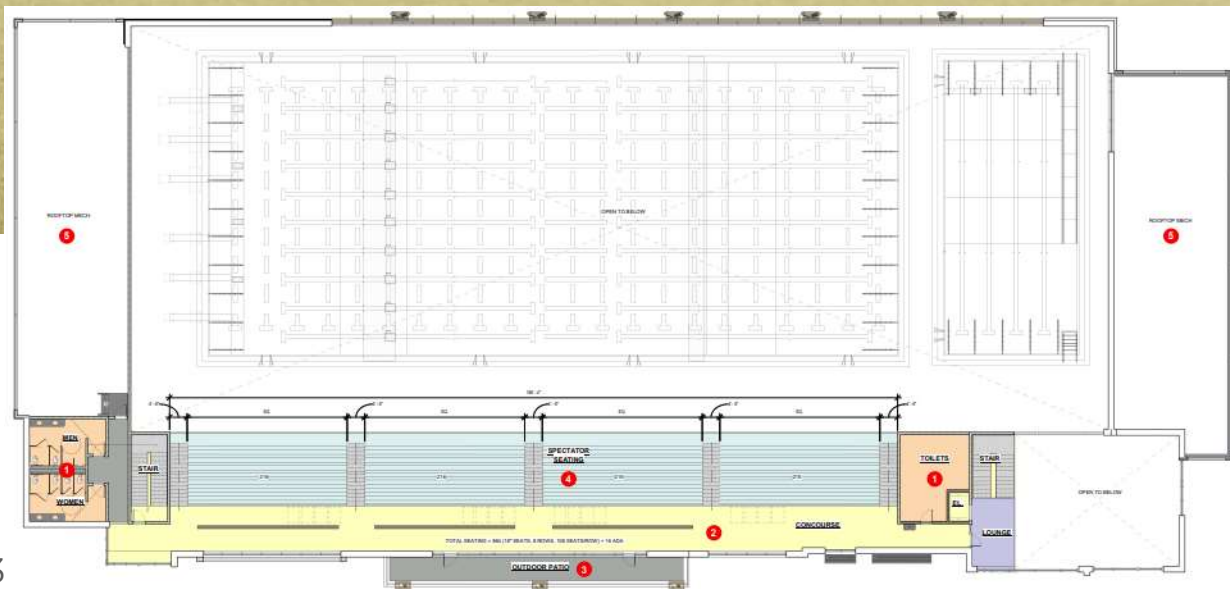




# Meyers Pool

City of Arvada / Jeffco / Apex  
OLC Designs – Saunders CMGC

Construction  
GMP  
\$38,219,600





# Meyers Pool

## City of Arvada / Jeffco / Apex

### OLC Designs – Saunders CMGC

Construction

#### Project Timeline

##### Phase 1: May - July 2023

- Construction of a semi-temporary parking lot south of the existing facility
- Pool is open
- Existing parking lot in use

##### Phase 2: July 2023 - June 2024

- Construction of the new facility in the existing parking lot
- Pool remains open
- Existing parking lot is closed, semi-temporary parking lot is in use

##### Phase 3: June - September 2024

- Construction of the new facility is ongoing
- Pool is closed
- Demolition of the existing facility begins





# 2023 Policy Projects

Regional Opportunities for Thriving Schools – BOE Nov 10, 2022

Capital Investments for Thriving Schools - BOE Jun 08, 2022



# School Closings & Consolidations

Resolution: Board of Education Decision on Staff  
Recommendation Regional Opportunities for Thriving Schools  
Thursday, November 10, 2022

Construction

GMP

\$6,886,094

Start 11/10/22

## Prospect Valley ES (8CR Addition) MOA & Phipps CMGC

Effective July 1, 2023,  
Kullerstrand Elementary  
School will close and  
combine its existing  
attendance area with that  
of Prospect Valley  
Elementary School;

GH Phipps to remain the contractor for the new scope.  
37 Week Design & Construction  
Schedule



Permit

# School Closings & Consolidations

Construction

Resolution: Board of Education Decision on Staff  
Recommendation Regional Opportunities for Thriving Schools  
Thursday, November 10, 2022

## Prospect Valley ES (8CR Addition) MOA & Phipps CMGC





# School Closings & Consolidations

Construction

Resolution: Board of Education Decision on Staff  
Recommendation Regional Opportunities for Thriving Schools  
Thursday, November 10, 2022

## Prospect Valley ES (8CR Addition) MOA & Phipps CMGC



# School Closings & Consolidations

Resolution: Board of Education Decision on Staff

Recommendation Regional Opportunities for Thriving Schools

Thursday, November 10, 2022

**Stober ES**

**(5CR Addition + Kitchen) LOA & CMGC GTC**

**Construction**

**IGMP**

**\$5,422,602**

Start 3/20/23



Effective July 1, 2023, New Classical Academy at Vivian will close and combine its existing attendance area with that of Stober Elementary School;



Permit





# School Closings & Consolidations

Resolution: Board of Education Decision on Staff

Recommendation Regional Opportunities for Thriving Schools

Thursday, November 10, 2022

Construction

**Stober ES**

**(5CR Addition + Kitchen) LOA & CMGC GTC**





# School Closings & Consolidations

Resolution: Board of Education Decision on Staff

Recommendation Regional Opportunities for Thriving Schools

Thursday, November 10, 2022

Construction

GMP

\$1,713,656

Alameda: Emory → Lasley (Emory  
Center Program → Rose Stein)

37 Week Design & Construction  
Schedule

**Stein ES**  
**(Elevator/Stair Addition)**  
**HCM & CMGC Himmelman**





# School Closings & Consolidations

Resolution: Board of Education Decision on Staff

Recommendation Regional Opportunities for Thriving Schools

Thursday, November 10, 2022

Construction

GMP

\$2,268,824

**Lasley ES**

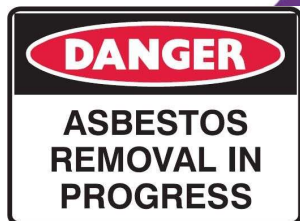
9 Week Construction Schedule

**(ADA Lifts / Toilet Rooms, Admin & Parking) H&M & CMGC Bryan**

A. Effective July 1, 2023,  
Emory Elementary School will  
close and combine its existing  
attendance area with that of  
Lasley Elementary School;



START May 30



# School Closings & Consolidations

Resolution: Board of Education Decision on Staff  
Recommendation Regional Opportunities for Thriving Schools  
Thursday, November 10, 2022

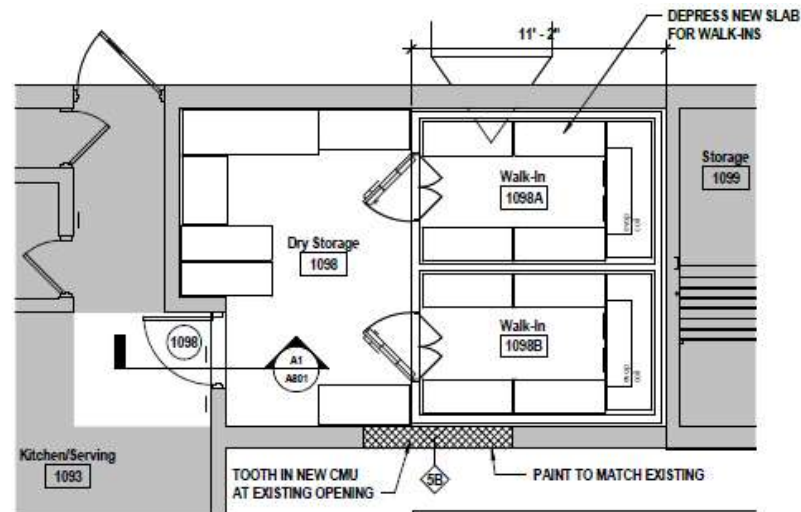
Construction  
Kendallvue  
Bid  
\$187,200

## Kitchen Improvements



**Kendallvue ES**  
**H&M GC GTC**

Bid w/ E&FR





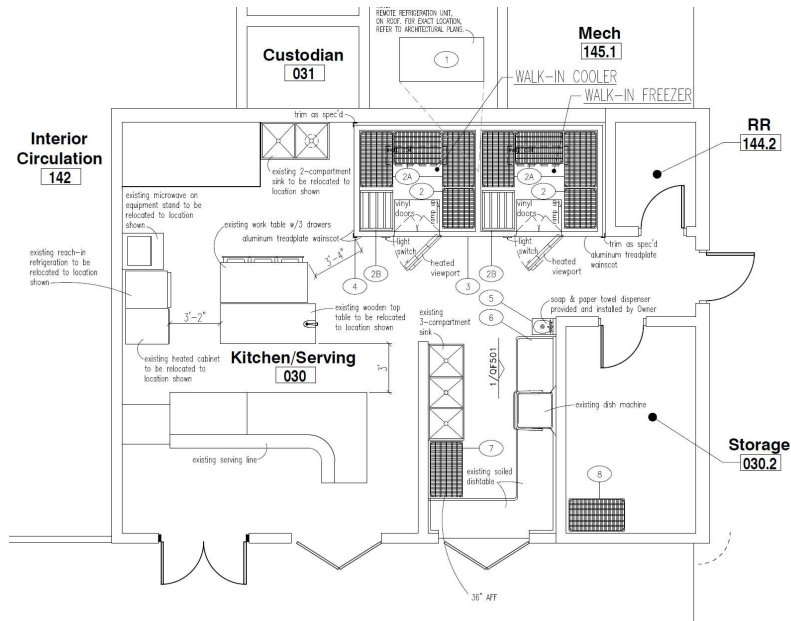
# School Closings & Consolidations

Resolution: Board of Education Decision on Staff  
Recommendation Regional Opportunities for Thriving Schools  
Thursday, November 10, 2022

Construction  
Fremont  
GMP  
\$304,571

## Kitchen Improvements

Fremont ES  
Eidos CMGC Mark Young



# School Closings & Consolidations

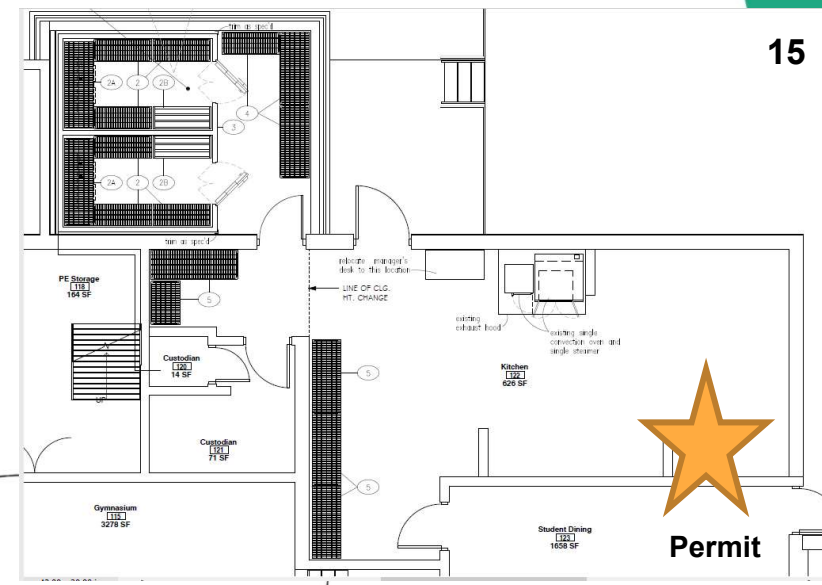
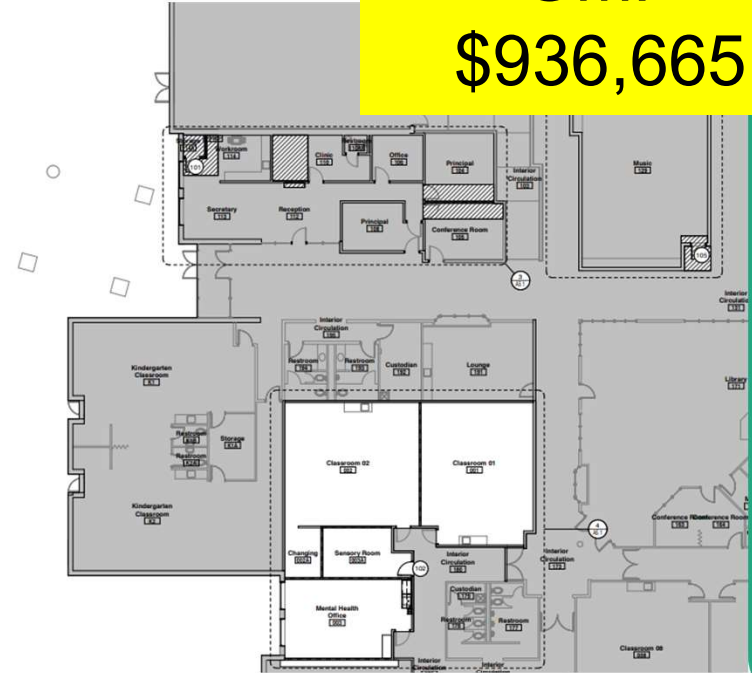
Resolution: Board of Education Decision on Staff  
Recommendation Regional Opportunities for Thriving Schools  
Thursday, November 10, 2022

## Kitchen Addition & Misc Renovations

Lukas ES  
Eidos CMGC Mark Young



Construction  
Lukas  
GMP  
\$936,665





# School Closings & Consolidations

Resolution: Board of Education Decision on Staff  
Recommendation Regional Opportunities for Thriving Schools  
Thursday, November 10, 2022

Construction

GMP 3/15/23

\$2,359,410



Arvada West:  
Campbell =  
ECE Center  
2023-24\*

Identify preschool options  
based on an articulated  
strategy for district-wide  
preschool as part of  
students' PK-12  
educational experience;

9 Week Construction Schedule





# School Closings & Consolidations

Resolution: Board of Education Decision on Staff  
Recommendation Regional Opportunities for Thriving Schools  
Thursday, November 10, 2022

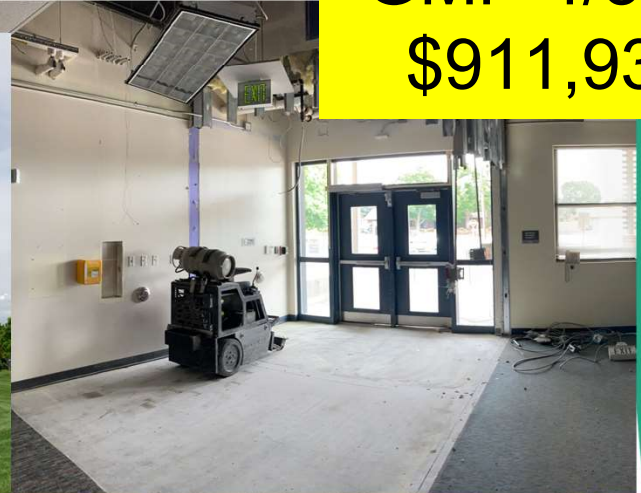
Construction

GMP 4/3/23

\$911,936

**DW – Receiving Schools Upgrades Bundle #2**  
**A/E MOA – CMGC Saunders**

**Sierra ES**



9 Week Construction Schedule

Identify preschool options  
based on an articulated  
strategy for district-wide  
preschool as part of  
students' PK-12  
educational experience;



Permit



# School Closings & Consolidations

Resolution: Board of Education Decision on Staff

Recommendation Regional Opportunities for Thriving Schools

Thursday, November 10, 2022

Construction

GMP 5/3/23

\$2,603,976

9 Week Construction Schedule

**DW – Receiving Schools Upgrades Bundle #2**  
**A/E MOA – CMGC Saunders**

**Weber ES**



Identify preschool options  
based on an articulated  
strategy for district-wide  
preschool as part of  
students' PK-12  
educational experience;



# School Closings & Consolidations

Resolution: Board of Education Decision on Staff

Recommendation Regional Opportunities for Thriving Schools

Thursday, November 10, 2022

Construction

GMP 3/29/23

\$120,230

## DW – Receiving Schools Upgrades Bundle #1 A/E RB+B – CMGC HPM

### Meiklejohn

9 Week  
Construction Schedule  
No Asbestos



Permit Applied 3/28/23  
Currently Evaluating

Identify preschool options  
based on an articulated  
strategy for district-wide  
preschool as part of  
students' PK-12  
educational experience;



# School Closings & Consolidations

Resolution: Board of Education Decision on Staff

Recommendation Regional Opportunities for Thriving Schools

Thursday, November 10, 2022

Construction

GMP 3/29/23

\$98,478

## DW – Receiving Schools Upgrades Bundle #1 A/E RB+B – CMGC HPM

### Semper

9 Week  
Construction Schedule  
No Asbestos



Permit Applied 3/28/23  
Currently Evaluating

Identify preschool options  
based on an articulated  
strategy for district-wide  
preschool as part of  
students' PK-12  
educational experience;

# School Closings & Consolidations

Resolution: Board of Education Decision on Staff

Recommendation Regional Opportunities for Thriving Schools

Thursday, November 10, 2022

Construction

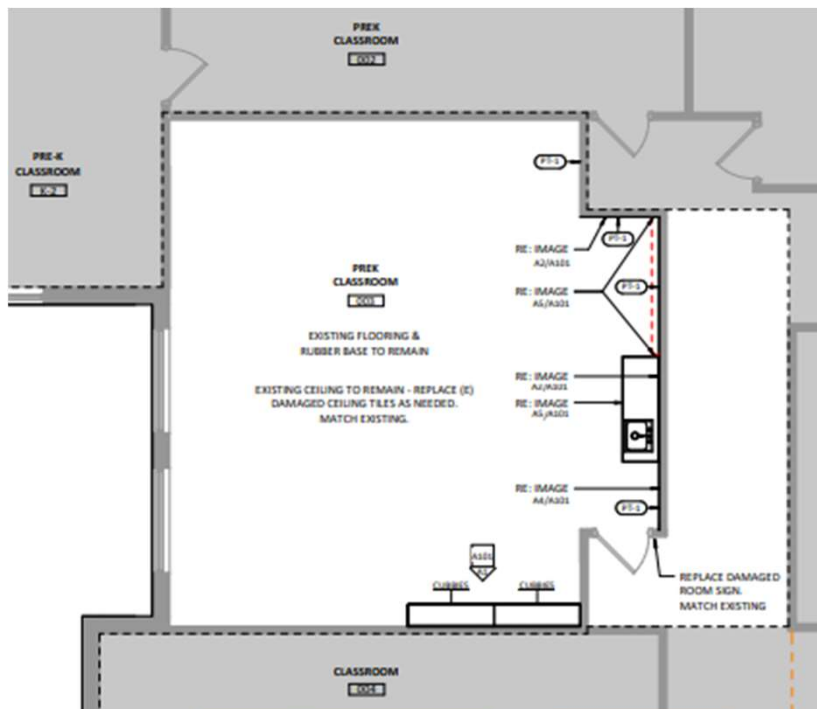
GMP 3/29/23

\$79,794

## DW – Receiving Schools Upgrades Bundle #1 A/E RB+B – CMGC HPM

Adams

9 Week  
Construction Schedule  
No Asbestos



53

Playground Scope



Permit Applied 3/28/23  
Currently Evaluating

Identify preschool options  
based on an articulated  
strategy for district-wide  
preschool as part of  
students' PK-12  
educational experience;





# School Closings & Consolidations

Resolution: Board of Education Decision on Staff

Recommendation Regional Opportunities for Thriving Schools

Thursday, November 10, 2022

Construction

GMP 3/29/23

\$243,104

## DW – Receiving Schools Upgrades Bundle #1 A/E RB+B – CMGC HPM

### Hutchinson

9 Week  
Construction Schedule  
No Asbestos



# School Closings & Consolidations

Resolution: Board of Education Decision on Staff

Recommendation Regional Opportunities for Thriving Schools

Thursday, November 10, 2022

Construction

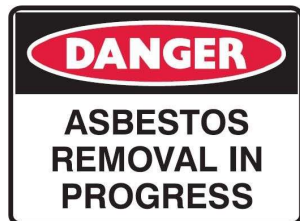
GMP 3/29/23

\$284,510

## DW – Receiving Schools Upgrades Bundle #1 A/E RB+B – CMGC HPM

7 Week  
Construction Schedule  
Due to Asbestos

**Vanderhoof**



55

**Playground Scope**



Permit Applied 3/28/23  
Currently Evaluating

Identify preschool options  
based on an articulated  
strategy for district-wide  
preschool as part of  
students' PK-12  
educational experience;





# School Closings & Consolidations

Resolution: Board of Education Decision on Staff

Recommendation Regional Opportunities for Thriving Schools

Thursday, November 10, 2022

Construction

GMP 3/29/23

\$282,698

DW – Receiving Schools Upgrades Bundle #1

A/E RB+B – CMGC HPM

7 Week  
Construction Schedule  
Due to Asbestos



Maple Grove



56

Playground Scope



Permit Applied 3/28/23  
Currently Evaluating

Identify preschool options  
based on an articulated  
strategy for district-wide  
preschool as part of  
students' PK-12  
educational experience;



# School Closings & Consolidations

Resolution: Board of Education Decision on Staff

Recommendation Regional Opportunities for Thriving Schools

Thursday, November 10, 2022

Construction

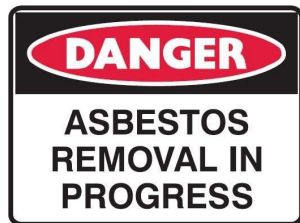
GMP 3/29/23

\$373,999

## DW – Receiving Schools Upgrades Bundle #1 A/E RB+B – CMGC HPM

7 Week  
Construction Schedule  
Due to Asbestos

**Green Gables**



57

**Playground Scope**



Permit Applied 3/28/23  
Currently Evaluating

Identify preschool options  
based on an articulated  
strategy for district-wide  
preschool as part of  
students' PK-12  
educational experience;





# School Closings & Consolidations

Resolution: Board of Education Decision on Staff

Recommendation Regional Opportunities for Thriving Schools

Thursday, November 10, 2022

Construction

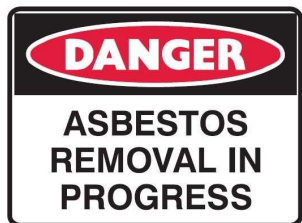
GMP 3/29/23

\$391,757

## DW – Receiving Schools Upgrades Bundle #1 A/E RB+B – CMGC HPM

7 Week  
Construction Schedule  
Due to Asbestos

### Fremont



58



Permit Applied 3/28/23  
Currently Evaluating

Identify preschool options  
based on an articulated  
strategy for district-wide  
preschool as part of  
students' PK-12  
educational experience;



# School Closings & Consolidations

Resolution: Board of Education Decision on Staff

Recommendation Regional Opportunities for Thriving Schools

Thursday, November 10, 2022

Construction

GMP 3/29/23

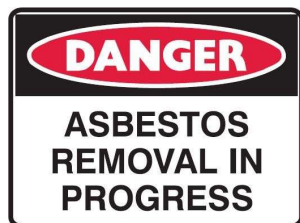
\$407,963

**DW – Receiving Schools Upgrades Bundle #1**

**A/E RB+B – CMGC HPM**

7 Week  
Construction Schedule  
Due to Asbestos

**Secret**



Permit Applied 3/28/23  
Currently Evaluating

Identify preschool options  
based on an articulated  
strategy for district-wide  
preschool as part of  
students' PK-12  
educational experience;



# School Closings & Consolidations

Resolution: Board of Education Decision on Staff

Recommendation Regional Opportunities for Thriving Schools

Thursday, November 10, 2022

Construction

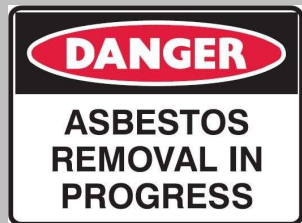
GMP 3/29/23

\$406,332

**DW – Receiving Schools Upgrades Bundle #1**  
**A/E RB+B – CMGC HPM**

7 Week  
Construction Schedule  
Due to Asbestos

**Foothills**



Permit Applied 3/28/23  
Currently Evaluating

Identify preschool options  
based on an articulated  
strategy for district-wide  
preschool as part of  
students' PK-12  
educational experience;

# School Closings & Consolidations

Resolution: Board of Education Decision on Staff

Recommendation Regional Opportunities for Thriving Schools

Thursday, November 10, 2022

Construction

GMP 3/29/23

\$527,877

**DW – Receiving Schools Upgrades Bundle #1**

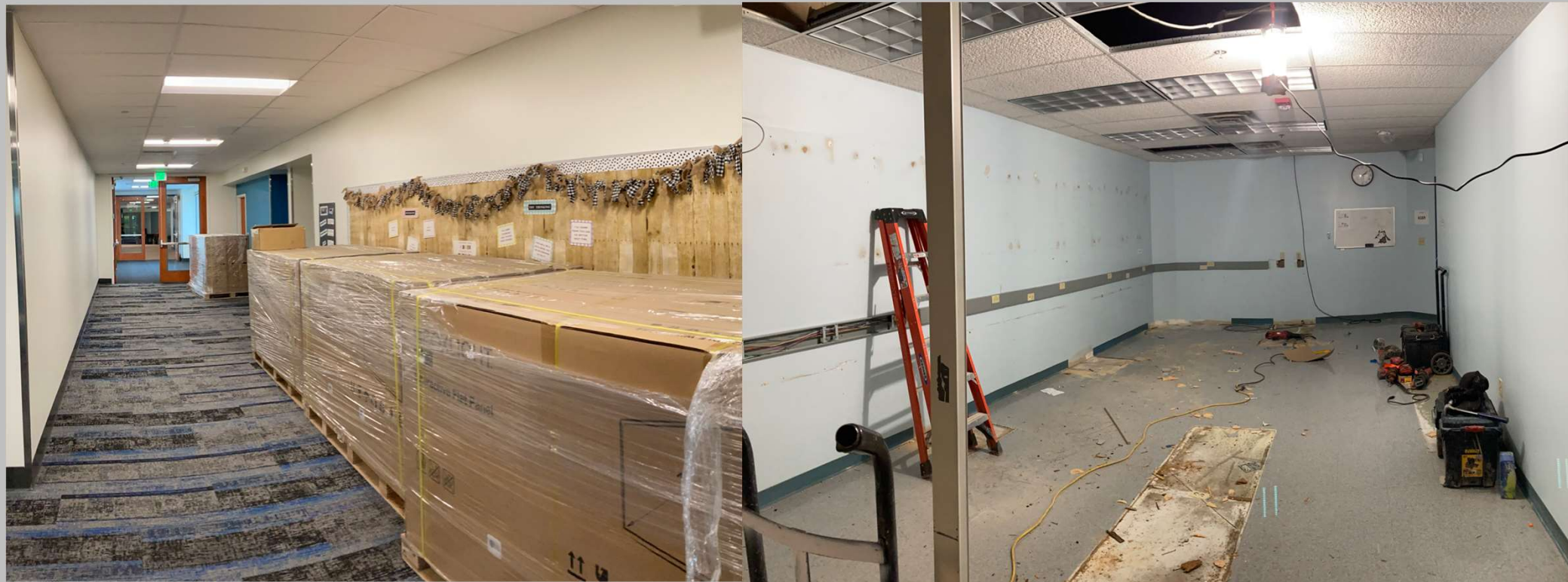
**A/E RB+B – CMGC HPM**

**Powderhorn**

9 Week

Construction Schedule

No Asbestos





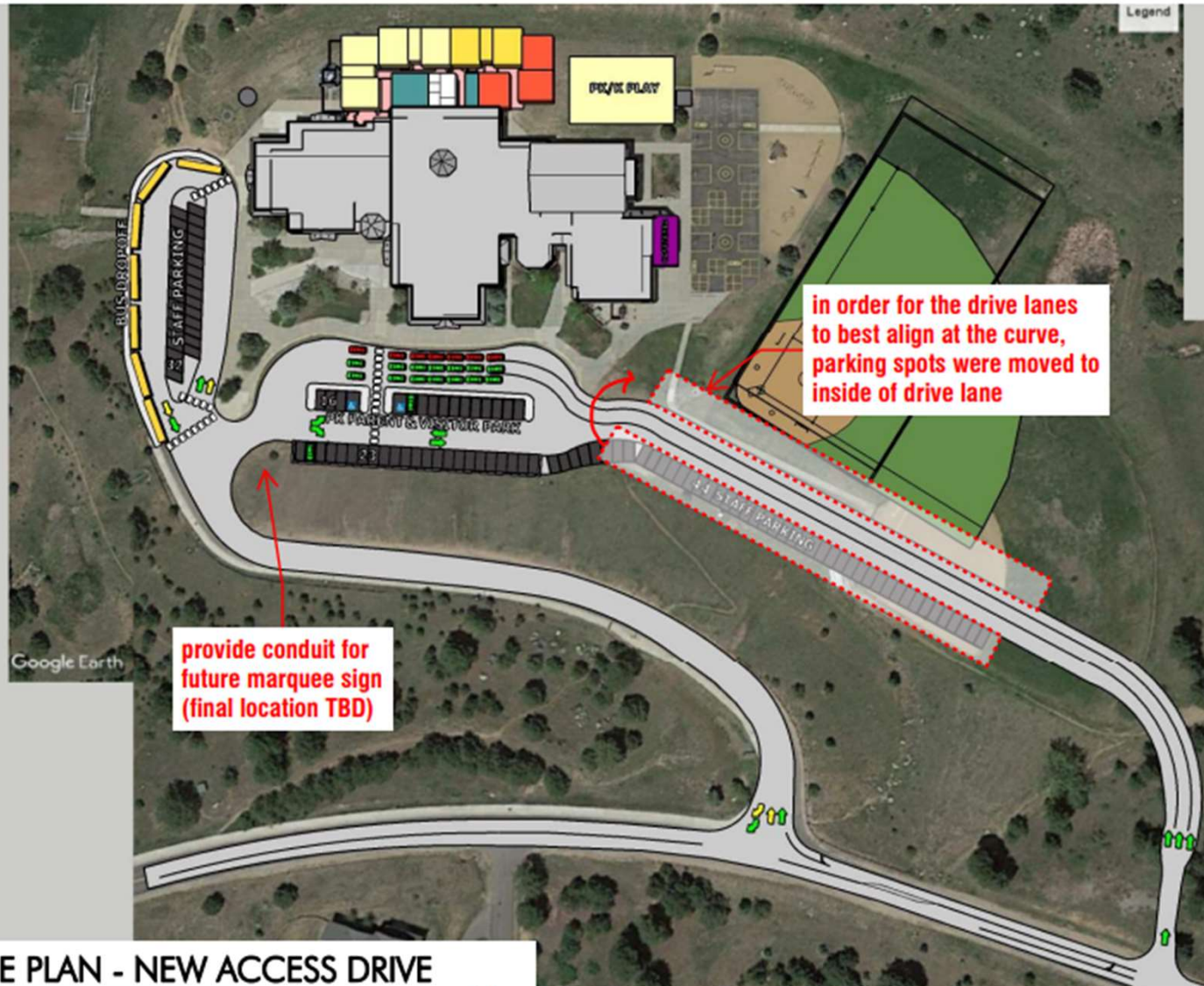
# School Closings & Consolidations

Resolution: Board of Education Decision on Staff  
Recommendation Regional Opportunities for Thriving Schools  
Thursday, November 10, 2022

## Bergen Valley ES - EUA & GC TBD

DD

Effective July 1, 2024,  
Bergen Meadow K-2 will  
close and the grade  
configuration of Bergen  
Valley will be converted to a  
PK-5.



OVERALL SITE PLAN - NEW ACCESS DRIVE

# School Closings & Consolidations

Resolution: Board of Education Decision on Staff  
Recommendation Regional Opportunities for Thriving Schools  
Thursday, November 10, 2022

## Bergen Valley ES - EUA & GC TBD

DD

Effective July 1, 2024,  
Bergen Meadow K-2 will  
close and the grade  
configuration of Bergen  
Valley will be converted to a  
PK-5.



ENLARGED 1<sup>ST</sup> FLOOR CLASSROOM ADDITION



# School Closings & Consolidations

Resolution: Board of Education Decision on Staff  
Recommendation Regional Opportunities for Thriving Schools  
Thursday, November 10, 2022

**Bergen Valley ES - EUA & GC TBD**

## PRELIMINARY SCHEDULE

- DAG Meeting week of 5/22
- 50% DD submittal: 6/8
- CD submittal: 7/13
- Bid Docs out: 7/27
- Bid Date: 8/24
- BOE Approval: September meeting
- Construction start – late September/early October
- Addition open: Winter Break '24-25

Effective July 1, 2024,  
Bergen Meadow K-2 will  
close and the grade  
configuration of Bergen  
Valley will be converted to a  
PK-5.

# Program Verification & Feasibility Study – DLR Group

Refined  
Concept Study

## Fletcher Miller Special School

BOE Jun 08, 2022 - Special Meeting-Study/Dialogue Session  
Capital Investments for Thriving Schools

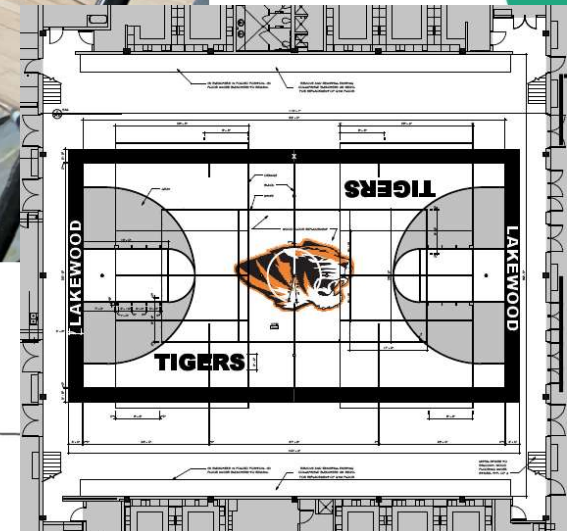
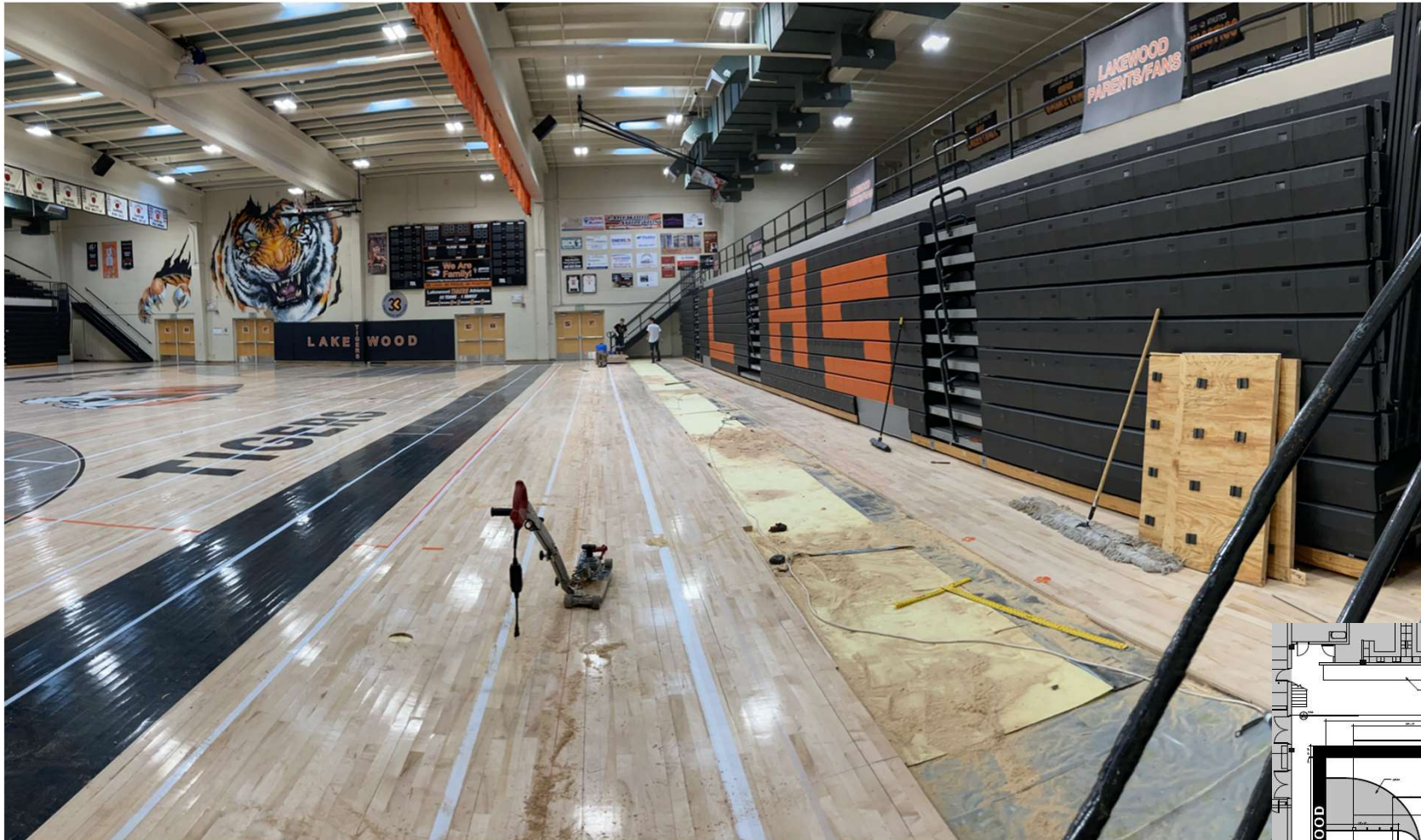




# 2023 None Bond Projects

# Lakewood HS – Gym Floor Replacement (Flood Damage – Insurance) Eidos – Sport Tech Flooring

Construction  
\$261,385.00





DW Mechanical 2023  
South Lakewood (1 RTU)

Construction  
\$1,082,796.00

Columbine – CMGC Himmelman



# Turf Field Replacement & Enlargement Wheat Ridge HS Eidos – GTC

Construction  
\$688,170.00



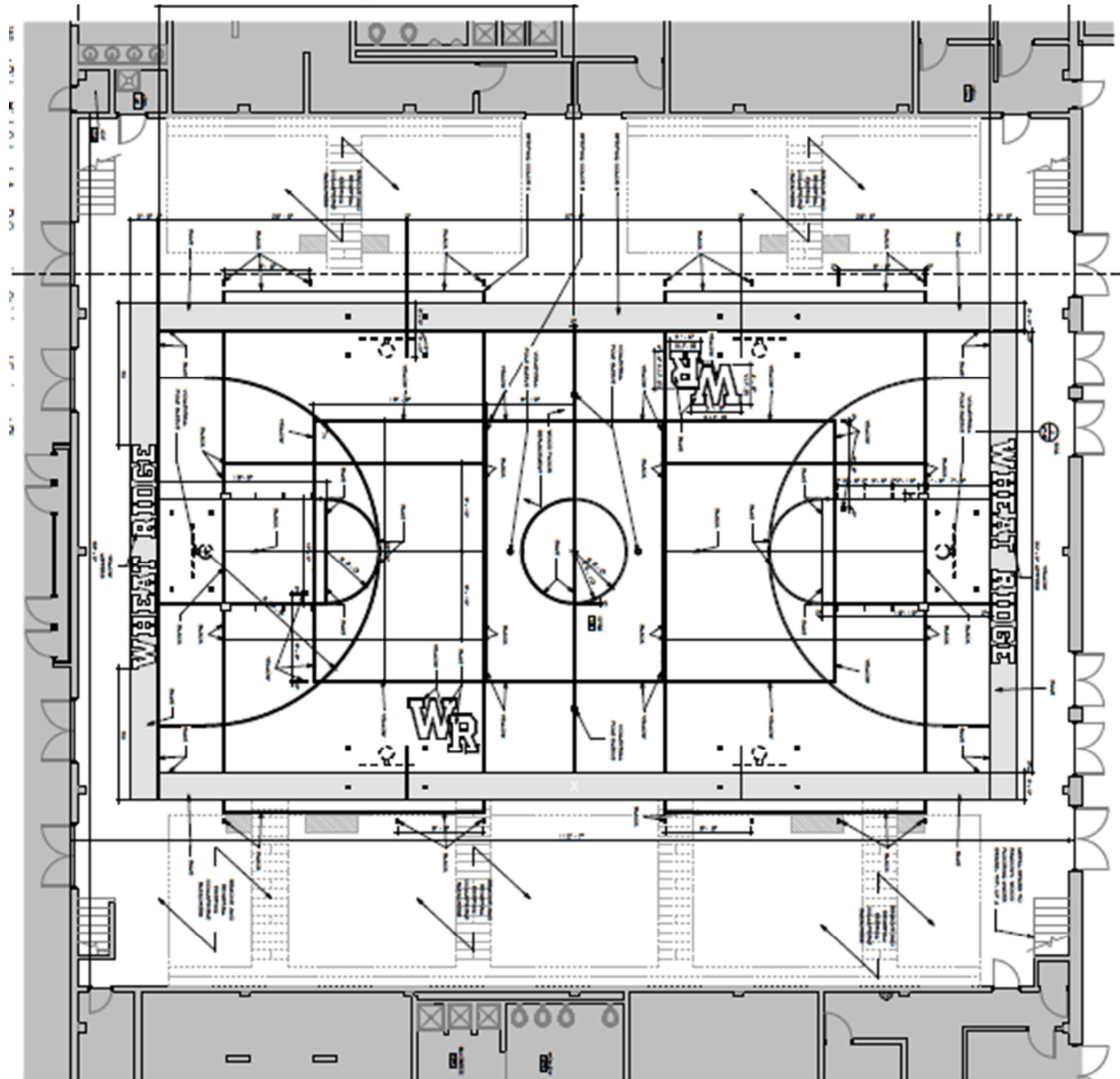


# Wheat Ridge HS – Gym Floor Replacement

Construction

\$262,784.00

Eidos – Sport Tech Flooring



# DW Exterior Lighting 2023

Construction  
\$125,203

Ackerman – Northwest Electric

- Replace Direct Burial electrical lines at the 6th & Kipling Stadium Lighting





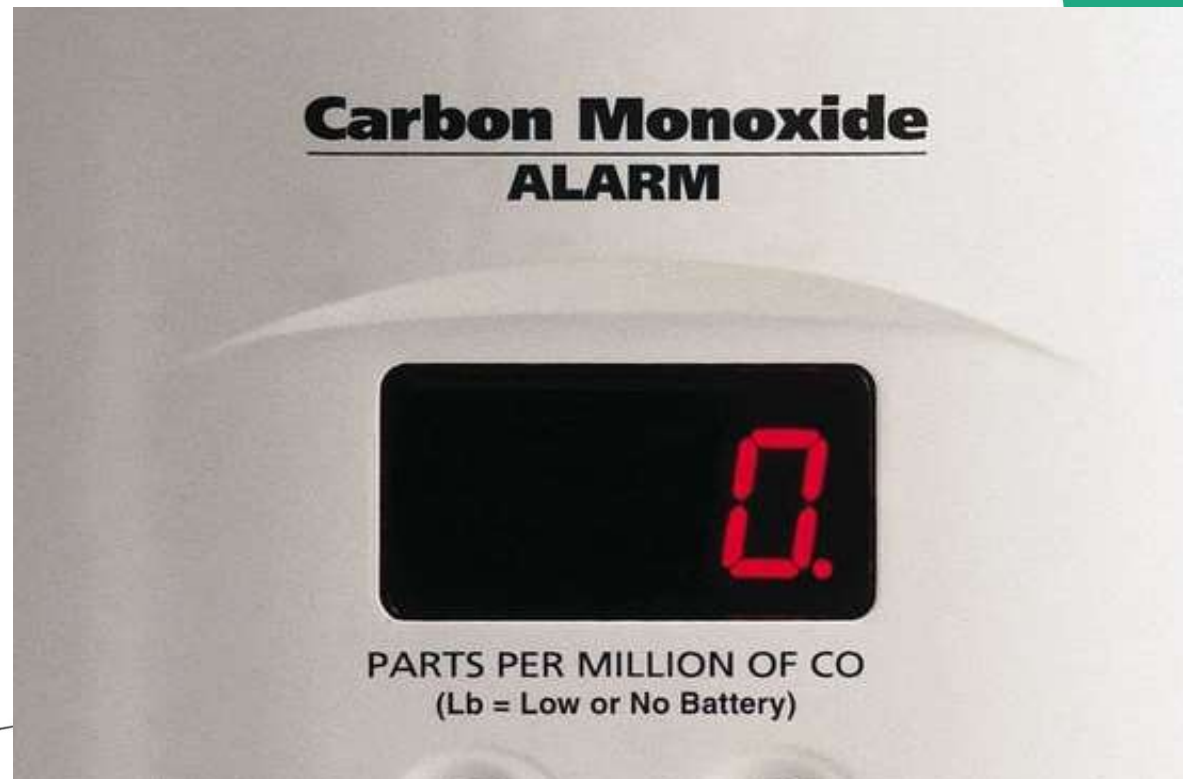
# DW Carbon Monoxide Notification

Construction  
\$317,056

7 Schools – Required by South Metro Fire District

Coronado, Blue Heron, Leawood, Normandy,  
Dutch Creek, Stony Creek, Columbine Hills

TLH Fire – Tower Electric



# DW FA Upgrades (Voice Evac) D'Evelyn & Pomona TLH Fire – Weifield Group

**Construction**  
\$1,178,353.00



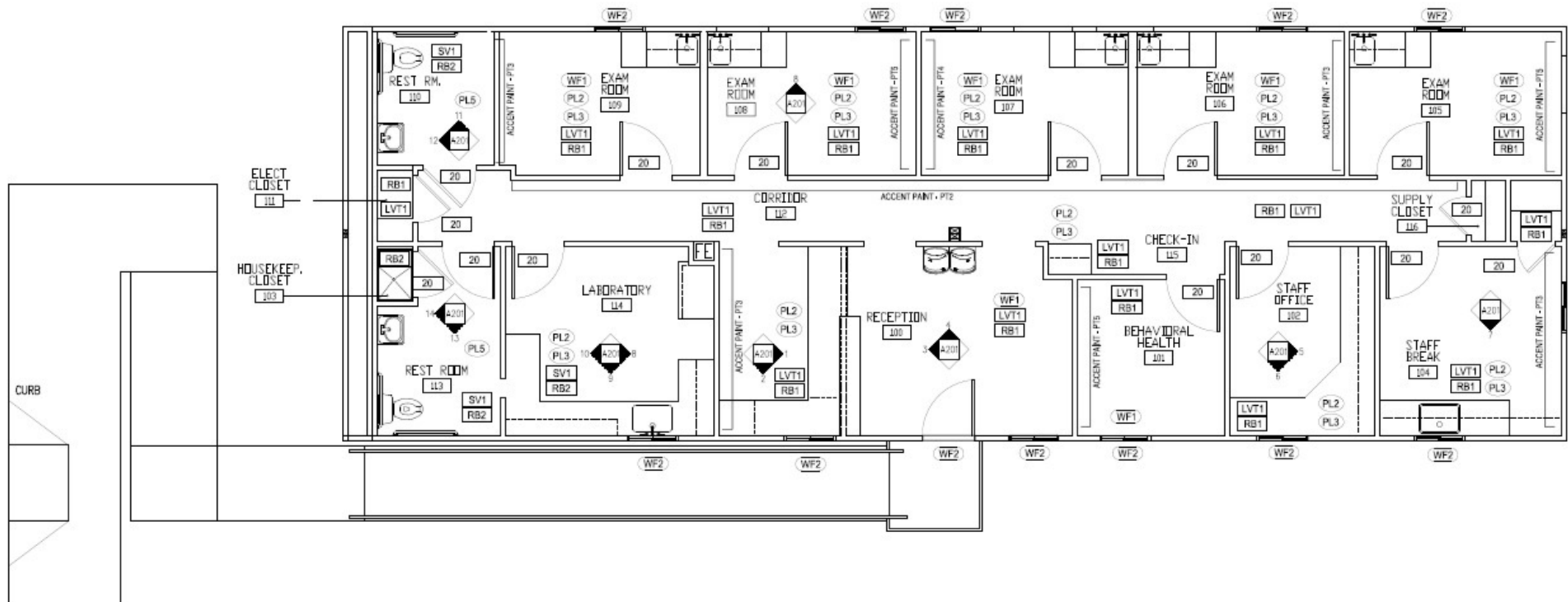


# Stride Clinic @ Alameda International Jr/Sr High

Jordin – Haselden

Construction  
\$446,000

Modular  
\$283,273

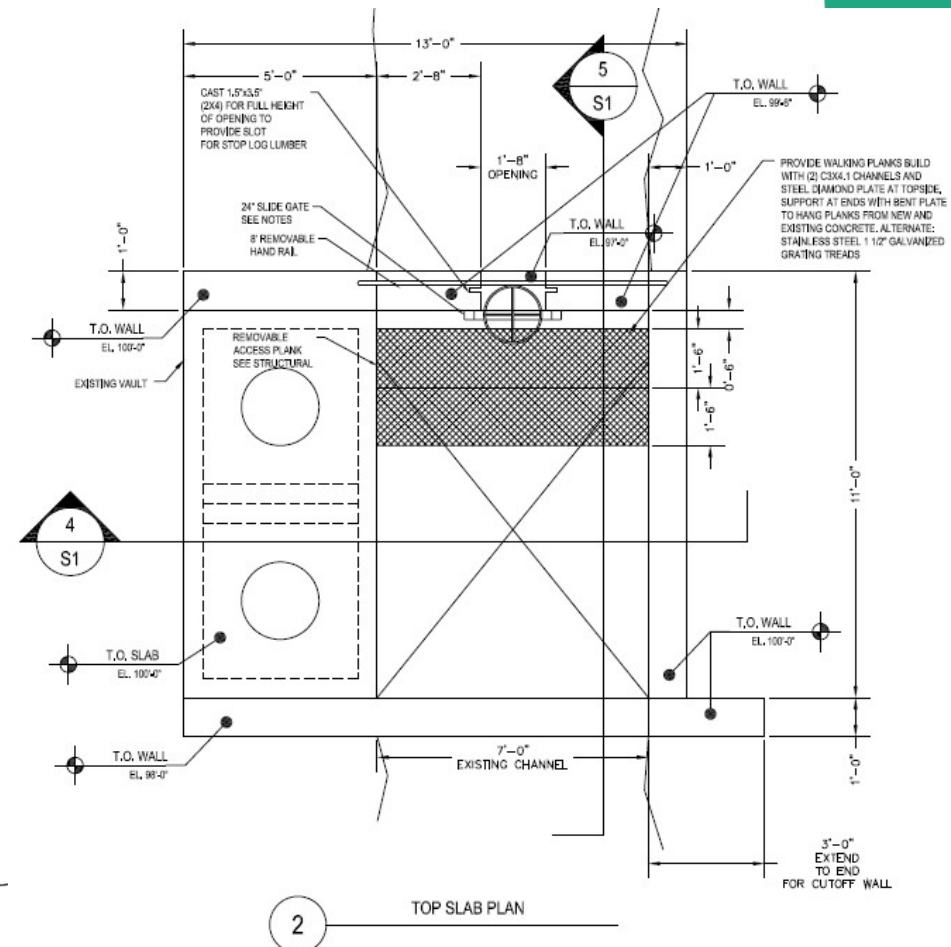


# Shadow Mountain Diversion Repair Failing Structure (water compliance) IMEG – GC Bear Excavating



Construction  
Bid 6/14/23  
\$169,749

Budget \$130,000  
(\$39,749) over budget





# Bear Creek K8 Condensing Boiler

Columbine – TBD

Consultant Selection

Estimate \$80,000

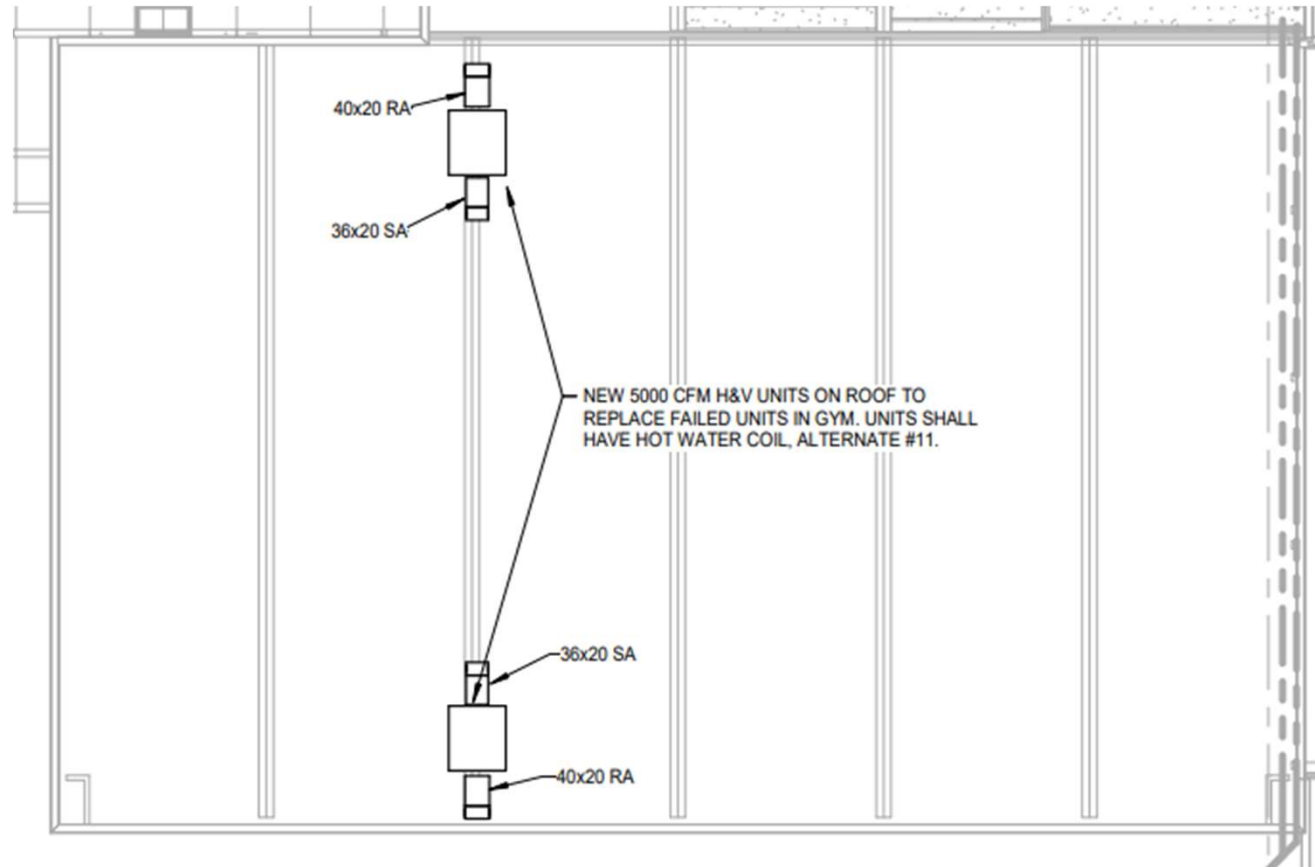


# Alameda HS AHU

TBD – TBD

Consultant Selection

\$200,000 Estimate





# 2024 Bond Projects

Location	Description	Bond Scope	
Leyden Rock	New School Golden	\$ 21,336,000.00	
West Lakewood	New School Morrison	\$ 22,402,800.00	
Bradford North	Efficiency & Future Ready (Flooring , Paving, LED Complete)	\$ 64,259.00	SD
Bradford South	Efficiency & Future Ready (Flooring, HVAC, LED Complete)	\$ 94,041.00	SD
Fairmount	Efficiency & Future Ready (Roofing, Flooring, Playground Complete) (HVAC Design Complete)	\$ 452,076.00	SD
Free Horizon	Efficiency & Future Ready (Secure Entry Remains)	\$ 175,000.00	SD
Leawood	Efficiency & Future Ready (Led Complete)	\$ 534,630.00	SD
McLain High School	Efficiency & Future Ready	\$ 605,816.00	SD
Meiklejohn	Efficiency & Future Ready (LED Complete)	\$ 200,705.00	DD
Normandy	Efficiency & Future Ready (Playground LED Complete)	\$ 536,090.00	SD
Rooney Ranch	Efficiency & Future Ready (Flooring, LED Complete)	\$ 141,623.00	SD
West Woods	Efficiency & Future Ready (flooring LED Complete) HVAC design 99% complete)	\$ 1,777,354.00	DD
Coal Creek K8	Efficiency & Future Ready	\$ 788,966.00	Re-Bid Fall
Drake Middle	Efficiency & Future Ready	\$ 658,174.00	Re-Bid Fall
Moore MS	Late Summer Bid Efficiency & Future Ready	\$ 925,804.00	Re-Bid Fall
Warren Tech Central	Efficiency & Future Ready -	\$ 2,492,054.00	Re-Bid Fall

Plus FF&E Projects





# Next Meeting 8/17/23